

# Lady Lane Park School & Nursery

The Bulletin: Friday 21st March 2025

Dear Parents

What a week we have had at Lady Lane Park School & Nursery. From Monday to Thursday, the main school was inspected by ISI - Our Gems Nursery was inspected by OFSTED on Tuesday.

Firstly, I would like to thank you for the time and effort you put in to completing the parent surveys. Your contributions have been invaluable and your support and honest feedback mean a lot.

Throughout the process, I have genuinely had an over-whelming sense of pride in our school. The pupils have been simply incredible, they have shown enthusiasm, resilience, and genuine love of learning. They are all a credit to your families and our school community, and I couldn't be prouder of each and every one of you.

Of course, I am extremely grateful to our fantastic staff team - I can't thank them enough for their dedication, commitment, and hard work. Our staff consistently go above and beyond to support, inspire, and challenge our pupils. Their passion and professionalism are evident every day, and it has been wonderful to see this recognised during the inspections. The non-teaching team have also played a large part in this week's inspection - I am lucky to have such a fantastic team by my side.

I will, of course share the outcome and full report as soon as I am able, but for now I just wanted to share my thanks.

Thank you all for coming in for Parents' Consultations this week, if you were unable to attend, please do contact your Form teachers to make an appointment.

Yesterday, The Travelling Book Fair visited school and once again was brilliantly managed by Mrs Ferguson & Mrs Durkin - thank you to them both. So far, over £900 was spent at the fair, as a school we receive a proportion of this to spend on books for school. If your child reserved a book, please come to the office to pick up before the end of the day on Monday, cash payment required.

Finally, thank you for your donations to 'Red Nose Day' today, school has been a sea of red and lots of fun.



I hope you all have a lovely weekend

Kind regards



Mrs Arnold & The Team

# Bingley Primary Schools Art Project!

Form 2's What Bingley Means To Me: Bingley 5 Rise Locks

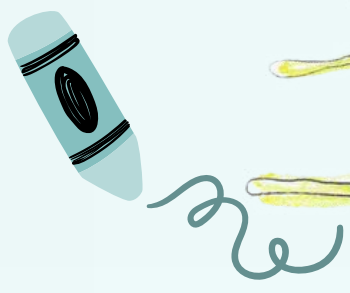
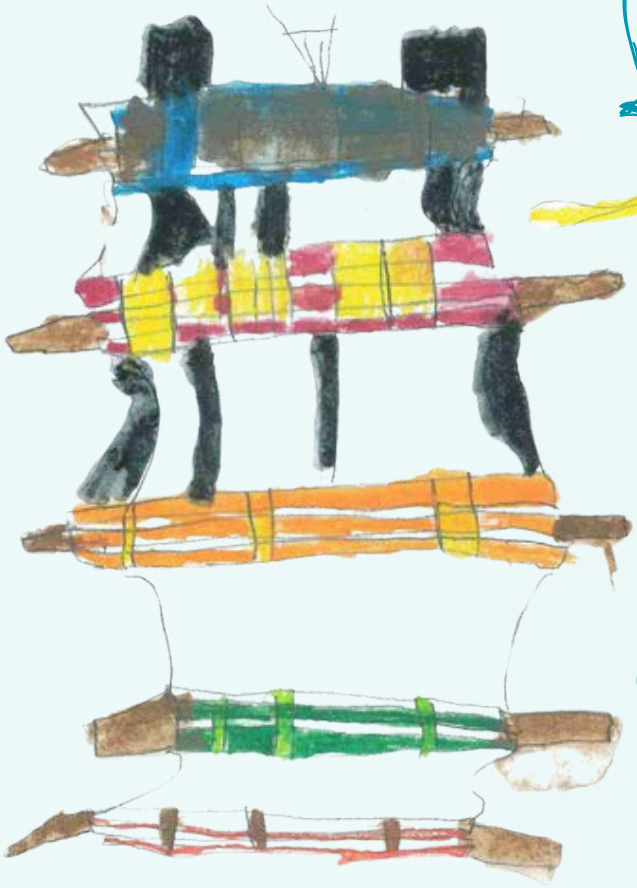


Take A Look At Some Of Our Entries!

What Bingley Means To Me:  
Bingley 5 Rise Locks



Take A Look  
At Some Of Our  
Entries!



# Red Nose Day



# Red Nose Day

baking  
fun!

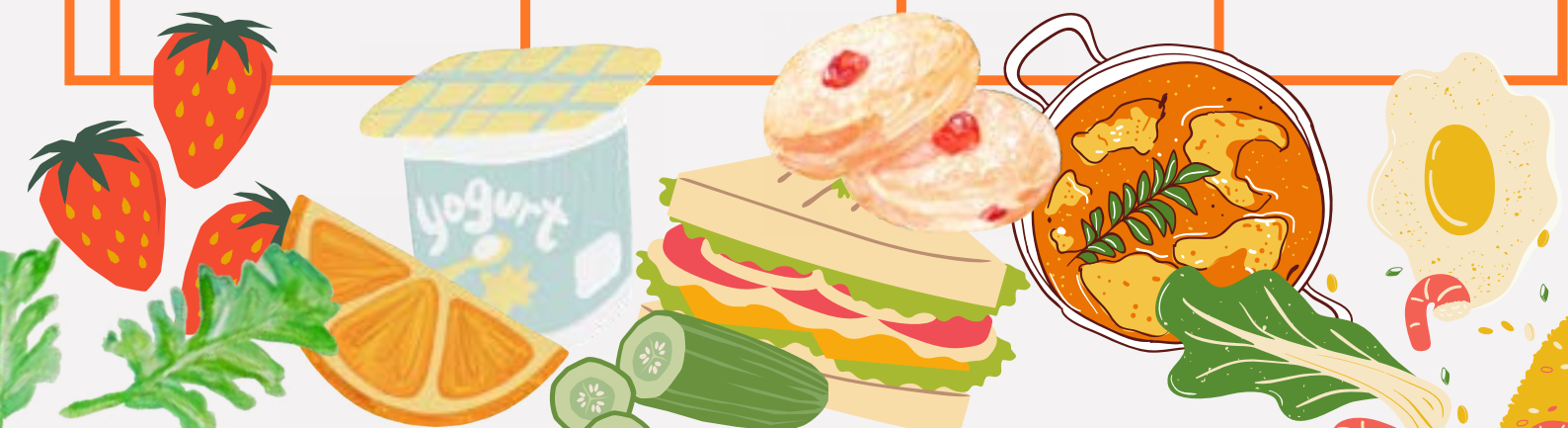




# MONDAY 24TH - FRIDAY 28TH MARCH 2025



	Main	Main (pre-selected)	Options	Dessert
MON	Pizza, Chips & Sweetcorn	Jacket Potato Cheese/Beans/Tuna		Fresh Fruit Salad
TUE	Sausage Rolls, Potatoes & Mixed Vegetables	Jacket Potato Cheese/Beans/Tuna	Vegetarian: Cheese Halal: Chicken	Toffee Mousse
WED	Mild Spiced Chicken Meatballs & Sauce and rice	Jacket Potato Cheese/Beans/Tuna	Vegetarian: Quorn Halal: Chicken	Chocolate Crispie Bun
THU	Homemade Lasagne & Garlic Bread	Jacket Potato Cheese/Beans/Tuna	Vegetarian: Vegetables Halal: Lamb	Fruity Jelly
FRI	Fish, Chips & Peas	Jacket Potato Cheese/Beans/Tuna		Chocolate Brownies



Our Easter Holiday Club is back, packed with fun activities and exciting sports sessions!



## Dates:

W/c Monday 7th April

W/c Monday 14th April (Closed on Friday 18th April for the Bank Holiday)



Mondays (7th & 14th April): Sports camp with Mr. Jarman

Tuesdays to Fridays: Fun-filled activities with our fantastic holiday team.



Friday 18th April: Closed for the Bank Holiday

For further information or to book your sessions message Mrs Kernick via class dojo.

Don't miss out book now!

We can't wait to see you there!





# Lady Lane Park School & Nursery Easter Competition

**TIME TO GET CREATIVE!!**

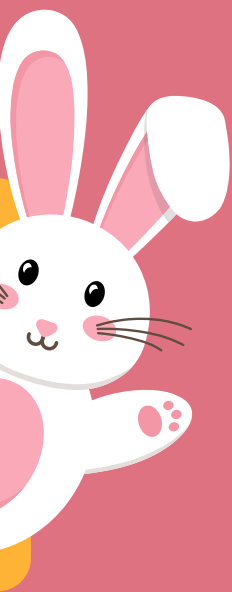
 **INFANT CHILDREN: DECORATE AN EASTER BONNET**

 **JUNIOR CHILDREN: DECORATE AN EASTER EGG**

 **PRIZES TO BE WON!**

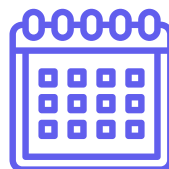
**WE LOVE TO SEE YOUR EGGCELLENT ENTRIES  
TIME TO GET BUSY!**

**Closing Date for entries:  
Thursday 3rd April 2025  
Winners Announced:  
Friday 4th April in Merit  
Assembly**





# DATES FOR YOUR DIARY



## MARCH

- TUESDAY 25TH - SPORTING HERO WORKSHOPS
- THURSDAY 27TH - 11+ ASSESSMENT DAY (NEW PUPILS & FORM 4, 5 & LVI PUPILS WHO HAVE NOT YET TAKEN PART AND WOULD LIKE TO)
- FRIDAY 28TH MARCH - KINDERGARTEN & FORM 1 MOTHERS' DAY TEA PARTY

## APRIL

- TUESDAY 1ST - BRIAN BERRESFORD AUTHOR VISIT
- WEDNESDAY 2ND - LVI FORM ASSEMBLY 9.00AM
- TUESDAY 3RD - NURSERY STAY & PLAY 9.30-11.00AM
- FRIDAY 4TH - DECORATED EGGS & BONNETS COMPETITION WINNER ANNOUNCEMENT
- SCHOOL CLOSURES FOR EASTER
- WHOLE SCHOOL EID PARTY

### EASTER HOLIDAY CLUB

- MONDAY 7TH - THURSDAY 17TH APRIL
- MONDAYS (7TH & 14TH APRIL): SPORTS CAMP WITH MR. JARMAN

CLOSED FRIDAY 18TH - GOOD FRIDAY

- MONDAY 21ST - BANK HOLIDAY SCHOOL & NURSERY CLOSED
- TUESDAY 22ND - OPEN FOR ALL
- WEDNESDAY 23RD - UVI/LVI BOGGLE HOLE, WHITBY RESIDENTIAL
- WEDNESDAY 30TH - FRENCH DAY
- ADVISORY GOVERNORS MEETING 7PM

## MAY

- THURSDAY 1ST - THE FRIENDS SPRING INTO SUMMER FAIR 3.45PM-5.00PM
- MONDAY 5TH - BANK HOLIDAY
- WEDNESDAY 7TH - FORM & TEAMS PHOTOGRAPHS

